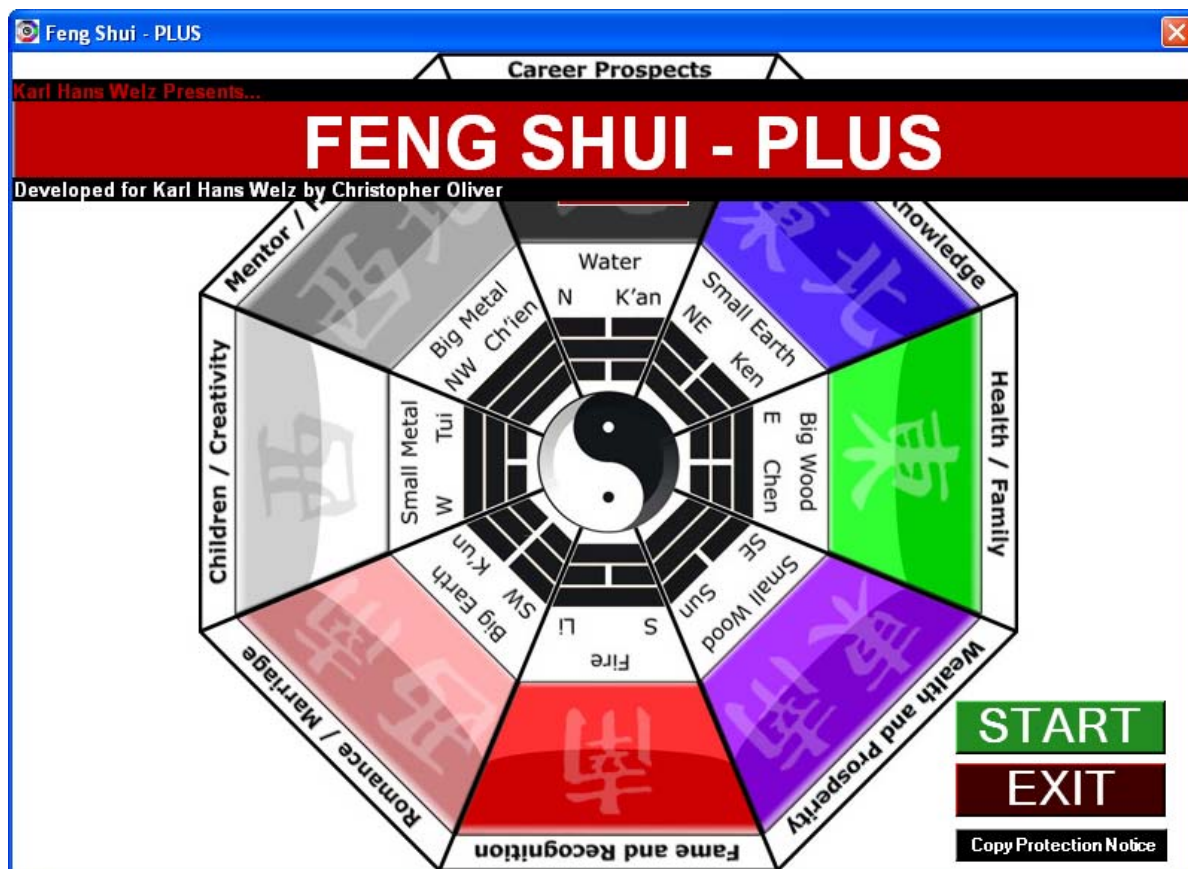


HSCTI - BEC

**HYPER SPACE COMMUNICATIONS
AND TECHNOLOGIES INTERNATIONAL**
Atlanta, Georgia, USA
BIO ENERGY CORPORATION
Budapest, Hungary



Manual

for the

FengShui-Plus Program

HSCTI, P.O. Box 1298, Woodstock, GA 30188, USA

Phone: (770) 783 0563

BEC - Bio Energy Corporation - Budapest, Hungary

Phone: +36 20 468 8180

Copyright© 2008 by Karl Hans Welz

All Rights Reserved. No portion of this manual may be used without expressed written consent of the author.

Orgone Generator®, Chi Generator®, Orgonite®, Orgonit™, Orgonita™, Power Radionics™, Super Radionics™, Super Psionics™, etc., are trademarks owned by Karl Hans Welz. Equally copyrighted (and protected with internal radionics settings) are the ideas and procedures used in the Radionics Programs.

Welcome to FengShui-Plus: The Program that enables you to get the full benefit of Feng Shui without the need to ever re- arrange or re-build anything!

You received this program with a transfer diagram. Put the hard copy on your Chi Generator® or next to it, while the .jpg image of the transfer diagram is running in your program. This transfer diagram operates as a structural link between program and Chi Generator®. You can establish a structural link from the program to yourself by connecting to the Chi Generator® with one of the the Transfer Couples, such as the TC 99, the PBT 69, the RAOPTC or the Chi-Card.

What follows, is a step-by-step introduction to this program.

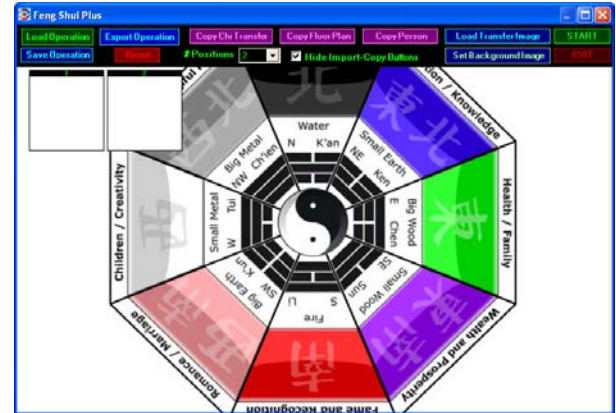
At first, install the program itself, following the instructions after you insert the FengShui-Plus CD.



Copy Protection Notice in the program



Click the "Start" button and the startup screen will appear. This screen has two positions showing. This program allows you to install up to 12 positions, for each of which you can indicate the function in general and add a description of the desired effect or target of the operation in particular.

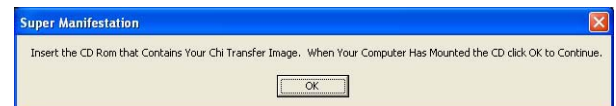


The next steps are installations of the Chi Transfer, target photos (if desired) and additional background images.

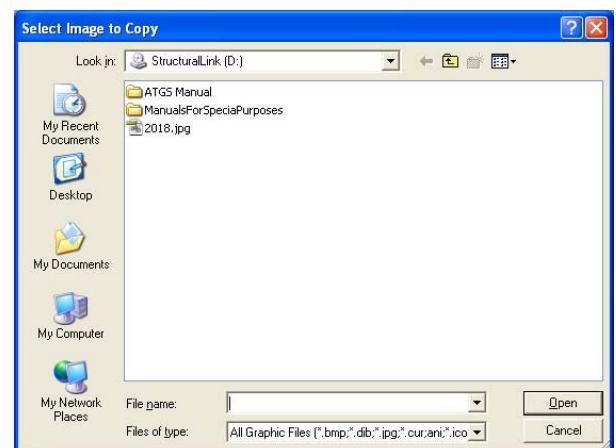
First start the program by clicking on the ikon on your desktop.

Before you begin to set up the program for specific operations, it is necessary that you install the transfer diagram. The transfer diagram is unique for every program. It either comes on a separate disk, which also contains the manual and additional information.

Click on the "copy transfer" button, and the following window will pop up.



Next, you insert the "Structural Link" CD and after the popup window appears, click on the number, which represents the transfer diagram.



Similarly you can install new backgrounds or floor plans and photos of persons by clicking on "copy floor plan" and "copy target."

You can either copy images from your computer or from CD's.

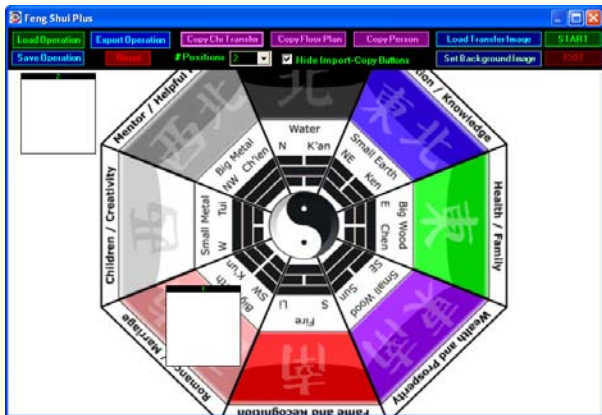
You can design a floor plan using photoshop, save it as a .jpg file and install from your computer or you can design a floor plan, scan it and save as a .jpg file.

In the example, I designed the floor plan on the computer. In fact, I installed the same floor plan that I showed on the web sites: a floor plan that is unworkable according to Feng Shui traditionalists, unless massive re-building and re-arranging has been done. Now the program is ready to run.

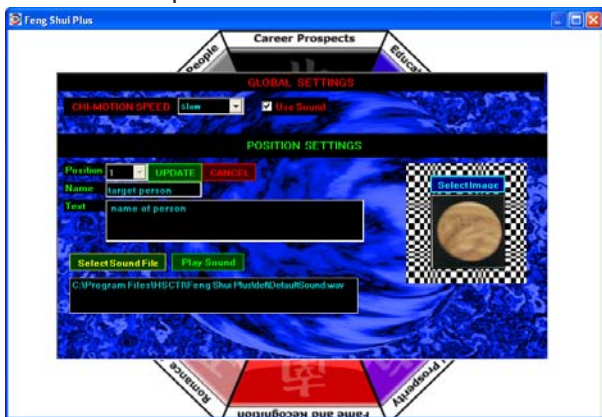
A simple Operation: one Feng Shui energy to one person:

You need only one of the two images.

Drag and drop the image to the desired Feng Shui direction. In our example, I selected the romance/marriage direction.



Click the position 1, and The popup gives you a series of options:



(1) You can determine the speed of the movement of the structural link to your generator

(the transfer image)

(2) you can edit the position

(a) by renaming it, in our case the we write "target person" and

(b) by describing it more accurately, in our case "the planet venus.

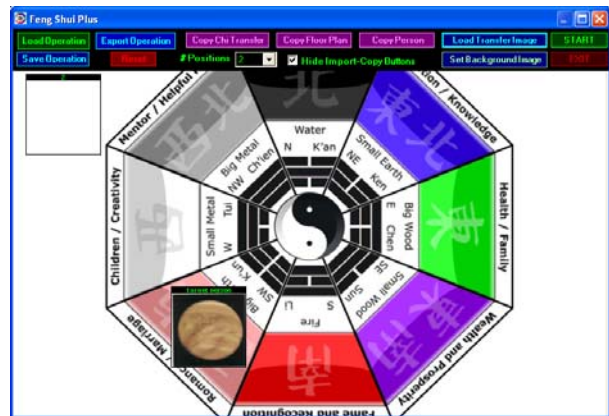
(3) you can select an image - I selected the planet venus instead of a person. Of course such a symbol can stand for a person.

(4) you can use sound for each position

(6) you can show the text

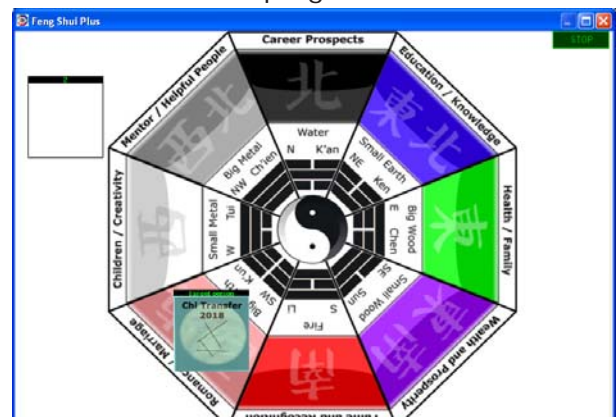
can work them by holding the mouse button down at each one of the knobs and decide

Once you have it all set up, you update the positions, which will lead back to the main screen.



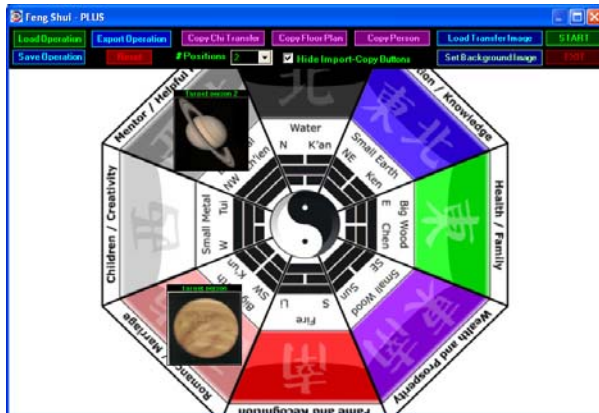
Now load the transfer diagram by clicking on the "load transfer image" button - the popup window shows the installed transfer diagram. Of course you can also design your own transfers.

With the transfer image loaded, you can start running the program as is by clicking the "Start" button. When working on yourself and you carry a transfer, you need not put your picture into the "target" position. If you identify yourself or any other person in the target position, a personal transfer is not needed. Of course you need to put on your Chi generator® the laminated transfer card that you received with this program.

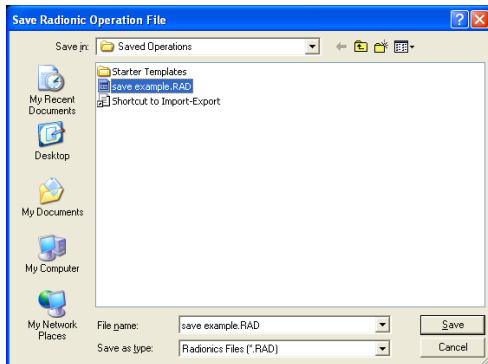


Naturally, you can run on two directions simultaneously. This is already an “impossible” according to Feng Shui traditionalists. Your direct evidence will be more than their wise-cracking. Simply put the “Venus” onto the second image.

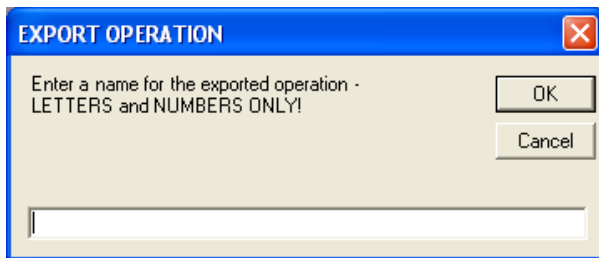
Alternatively, you can power several persons with the Feng Shui corners of their choice. I added the planet Saturn.



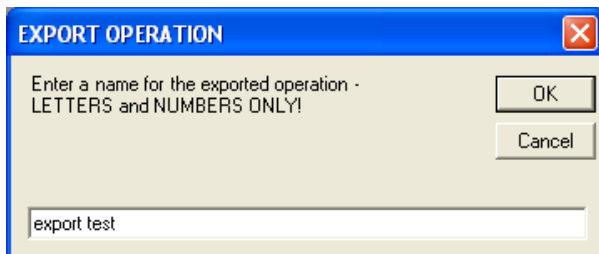
To save, click the “save operation” button and install where you prefer (next column on top).



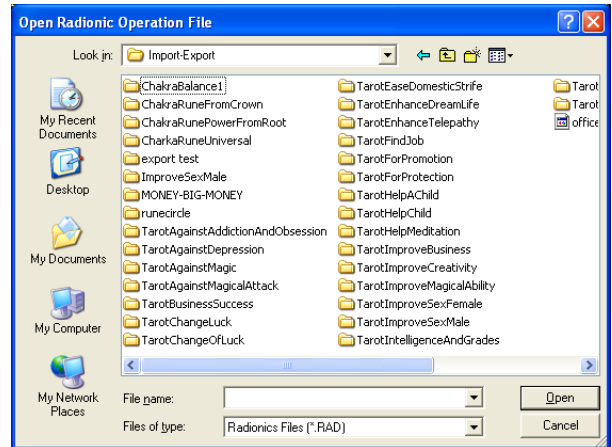
Now, for practice, export the operation.



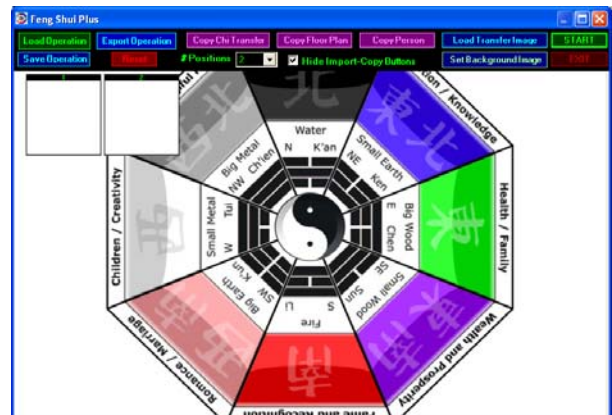
enter the name



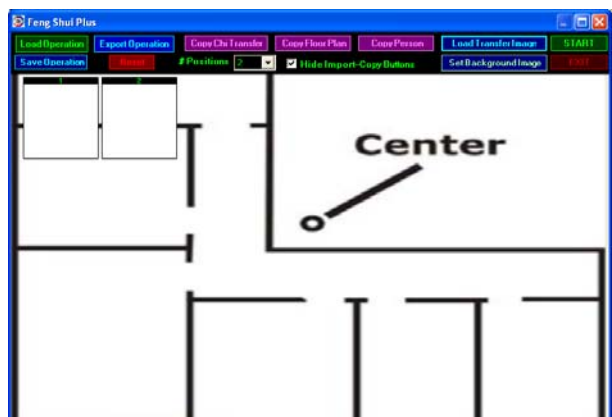
and go to the import-export folder from “load” to see how it installed. Again, feel free to make folders and subfolders to match best your needs.



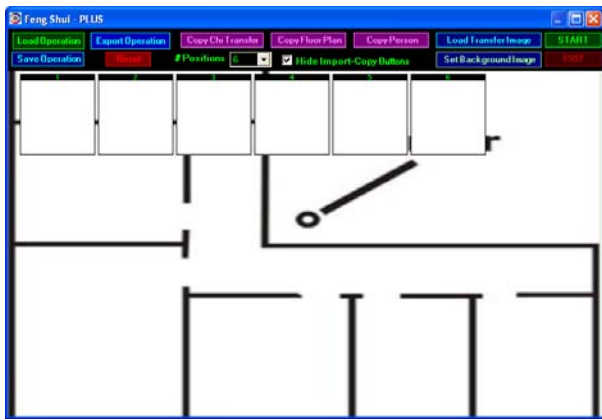
Reset - for a new operation.



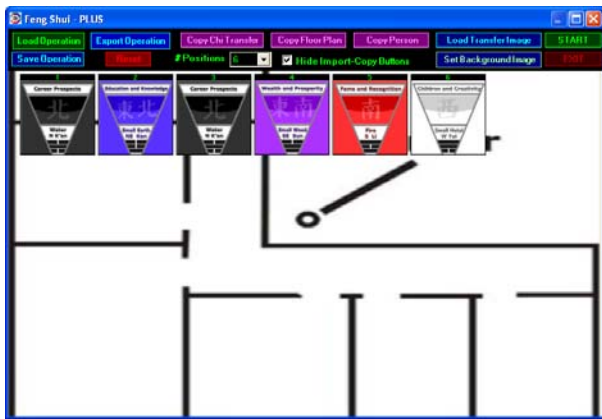
... and you are ready for a new operation. Install a floor plan into the background and load the transfer image.



You want specific energies in 5 rooms, a couple of them in the corner room, so you select 6 positions.



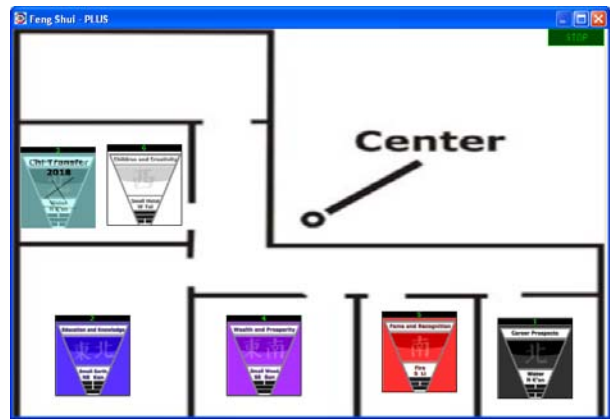
Put the direction of your choice into the positions. You can add descriptions of how you want things to work out. Instead of the directions, you can also enter symbols of the “packs.”



Now put the energies into the offices and areas of your choice.



Again, you can save the operation and run it for several hours. The advantage of this setup is that you can change the energy in each room without any need at all to re-arrange furniture. To change, simply add or remove directions and put them wherever you desire to have them. You certainly have noticed that in our example the same direction, “career prospects,” appears twice and that the setup



the program in operation.

is at odds with anything traditionalists try to tell you as “absolute truth.”

To understand this better, think of a cave-man. He or she could select the “energetically best place” to go to sleep, i.e., consider safety and warmth, or they simply could light a fire and sleep wherever they please to do so. Experience is worth more than a thousand words. Thinking of the way innovations are accepted in our enlightened days, perhaps there was someone telling that “fire is demonic” or that “there is no evidence of fire” back then.

Additional Suggestions

(1) When setting up your own operations, start with a relatively small number of parameters and increase as you gain more experience.

(2) You can open more than one program. In fact, you can open as many as the computer allows. Important is an additional setup for equal distribution of energy: You need to use 2 positions only: Target = all operations running

Trend = equal distribution of energy
Naturally, you need a powerful device to run several operations simultaneously.